

# MONTHLY MEMBERSHIP PROGRESS REPORT

District 2 X3

Results as of: 12/31/2023

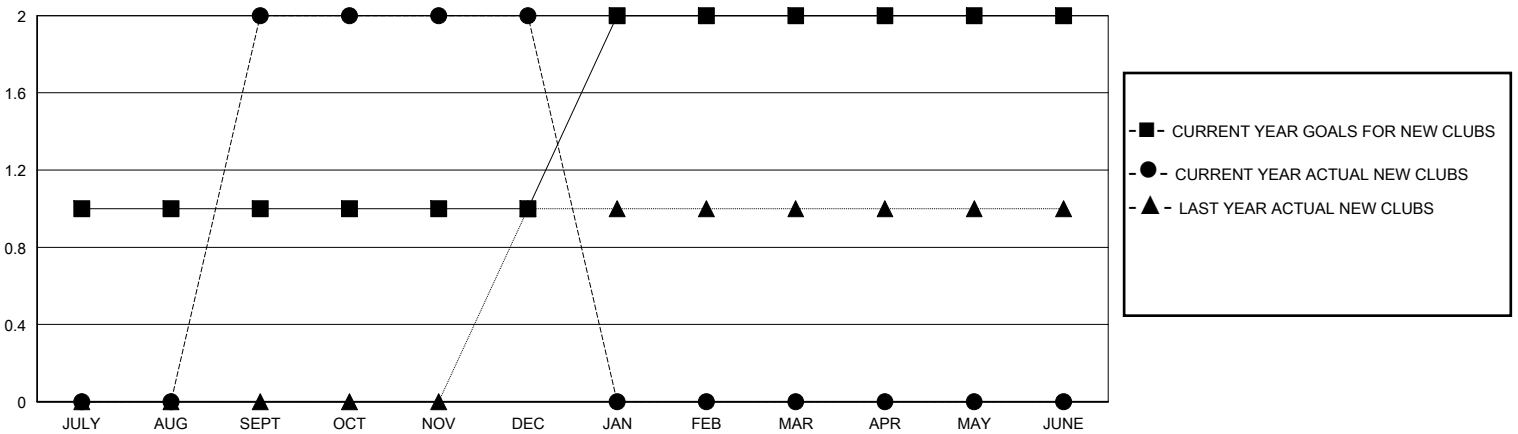
GMT:

LOCATION TEXAS

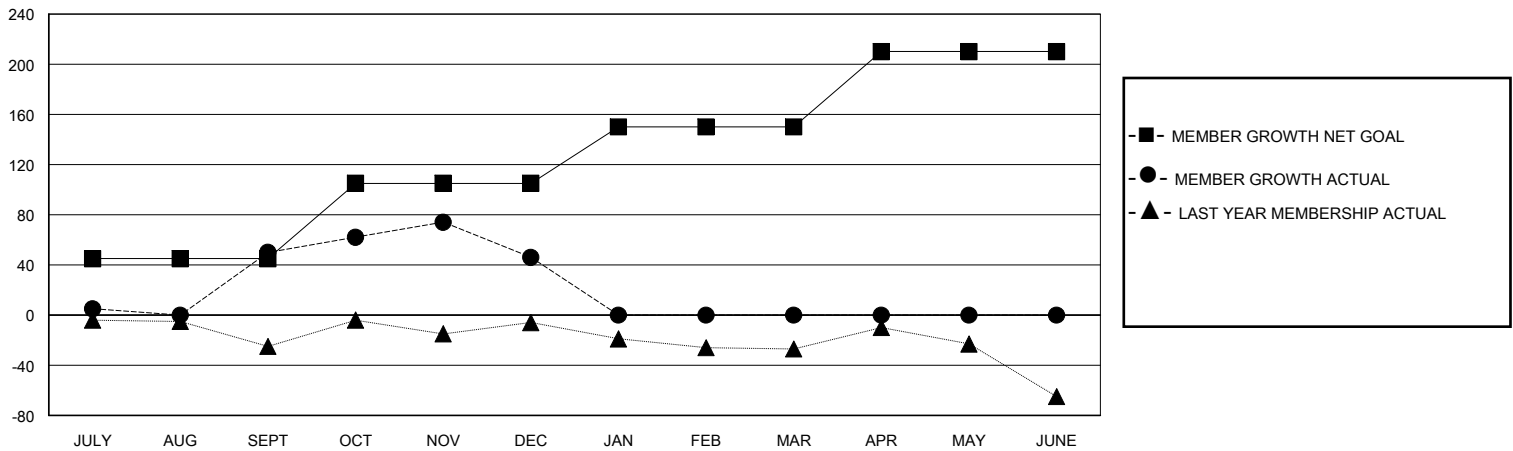
GMT CA

Clubs				Members			
RESULTS FOR 2023-2024				RESULTS FOR 2023-2024			
QUARTER	NEW CLUB GOAL	NEW CLUBS	DROPPED CLUBS	QUARTER	MEMBER GROWTH NET GOAL	MEMBER GROWTH ACTUAL	DROPPED MEMBERS ACTUAL (including transfers)
JULY/AUG/SEPT	1	2	1	JULY/AUG/SEPT	45	99	44
OCT/NOV/DEC	0	0	0	OCT/NOV/DEC	60	66	67
JAN/FEB/MAR	1	0	0	JAN/FEB/MAR	45	0	0
APR/MAY/JUNE	0	0	0	APR/MAY/JUNE	60	0	0

GOALS AND ACTUAL NEW CLUBS CUMULATIVE



GOALS AND ACTUAL MEMBERS CUMULATIVE



DROPPED CLUBS: 1

32 CLUBS OF 51 ADDED 1 OR MORE NEW MEMBERS

GENDER DISTRIBUTION

MALE 842 (62.14%)  
FEMALE 513 (37.86%)

DROPPED MEMBERS

[CLICK HERE FOR CUMULATIVE MEMBERSHIP DATA](#)

DECEASED	4
CLUB CANCELLED	0
OTHER	107
<b>TOTAL</b>	<b>111</b>

TOTAL FAMILY UNIT MEMBERS	157
FAMILY MEMBERS PAYING HALF DUES	79